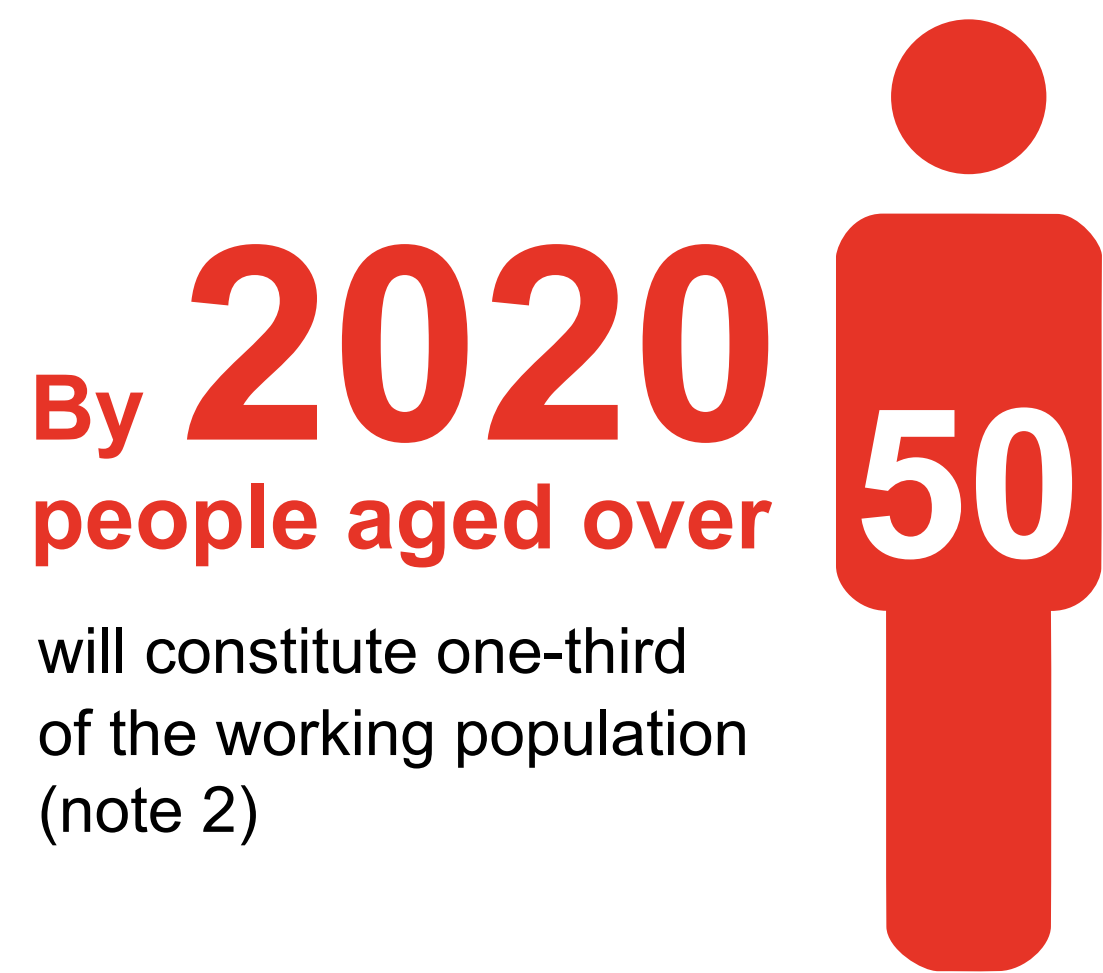


# Health and the Workplace

## Health issues affecting UK employees



will constitute one-third of the working population (note 2)



employees have reported having **musculoskeletal conditions** (note 5)



of current employees reported having a **mental health condition** (note 3)

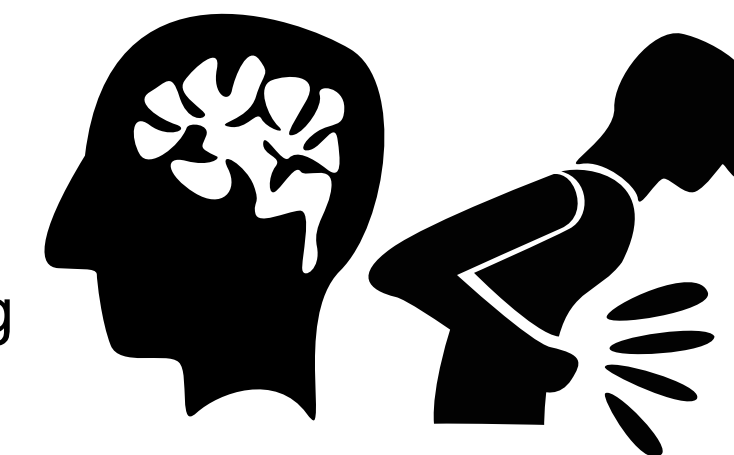


of the working population in England report having **at least one long term health condition** (note 3)



are lost to **sickness absence every year** (note 5)

**Employees** with both **mental and physical health** conditions are more likely to see their health affecting their work (note 4)

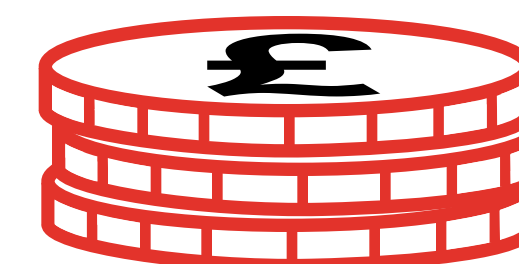


In **2013**



of sickness absence could be attributed to **musculoskeletal conditions** **23%** of all working days lost (note 6)

**Employers spend**



**£9bn**

each year on sick pay and associated costs (note 4)